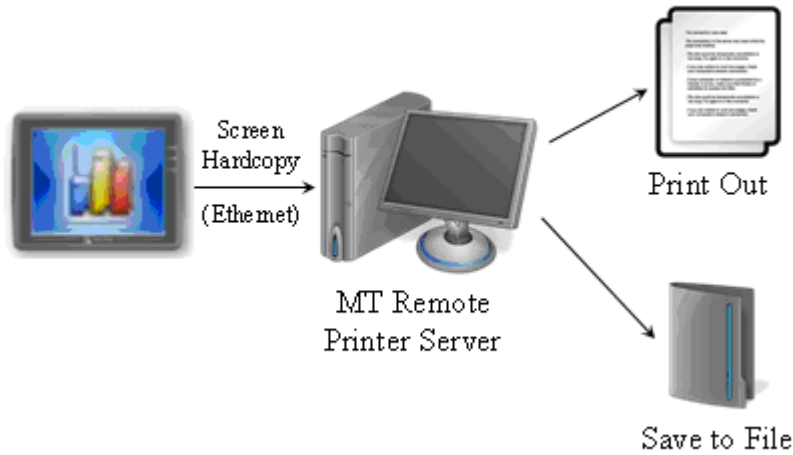


## Appendix 2 EasyPrinter

The MT remote printer server can print out that the screen on HMI via Ethernet.

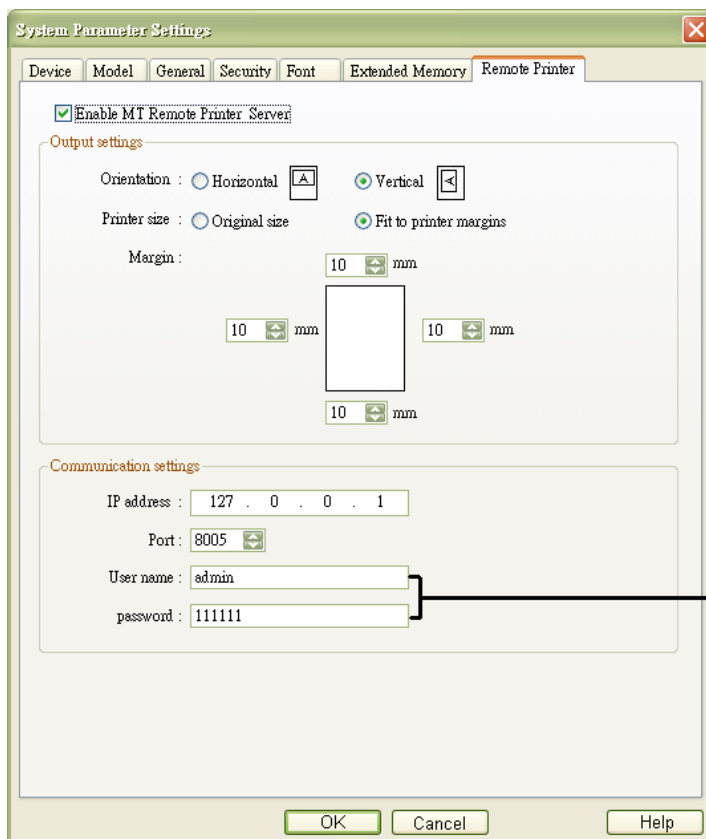
### 1. Introduction



### 2. Setting of EasyPrinter

Step1: Enable MT Remote Printer Server in EB8000

On System Parameter Settings / Printer Server, check the “Enable MT Remote Printer Server” box

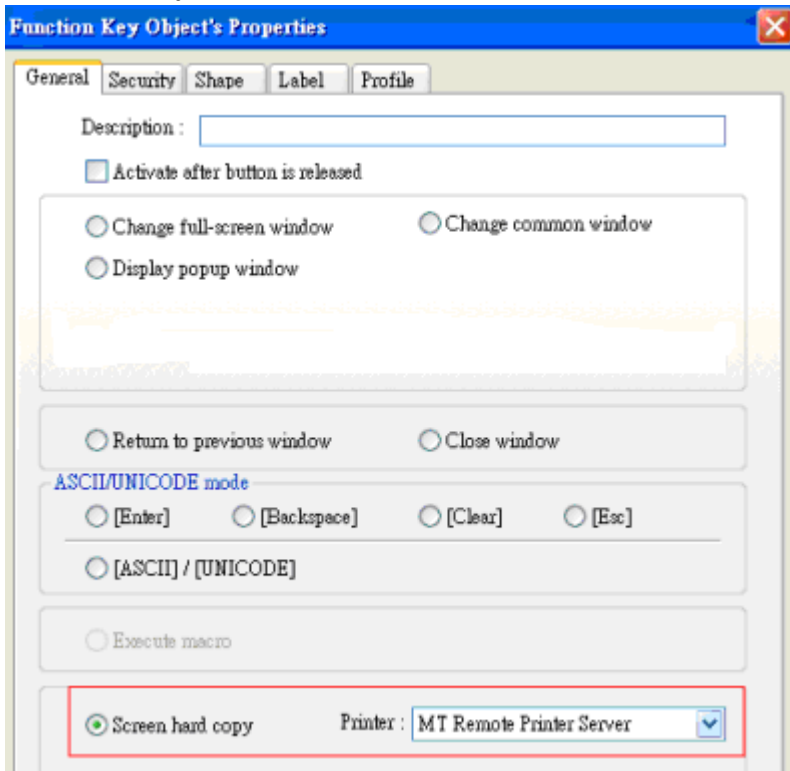


Note:  
In MT Remote Printer Server, there is a communication setting page. Before using MT Remote Printer the IP address, Port, User name and password have to set correctly.

<b>IP address</b>	Assign HMI IP address for remote printer via network
<b>Port</b>	The range from 1 to 65535
<b>User name</b>	User define
<b>Password</b>	User define

Step2: Choose Remote printer as output device when hardcopy and set the Function key or the PLC control on project to trigger screen hardcopy function.

### Function Key



### PLC Control

**PLC Control**

Description :

PLC name : Local HMI

Attribute

Type of control : Screen hardcopy

Active only when designated window opened

Trigger address

Device type : LB

Address : 0  System tag  Index register

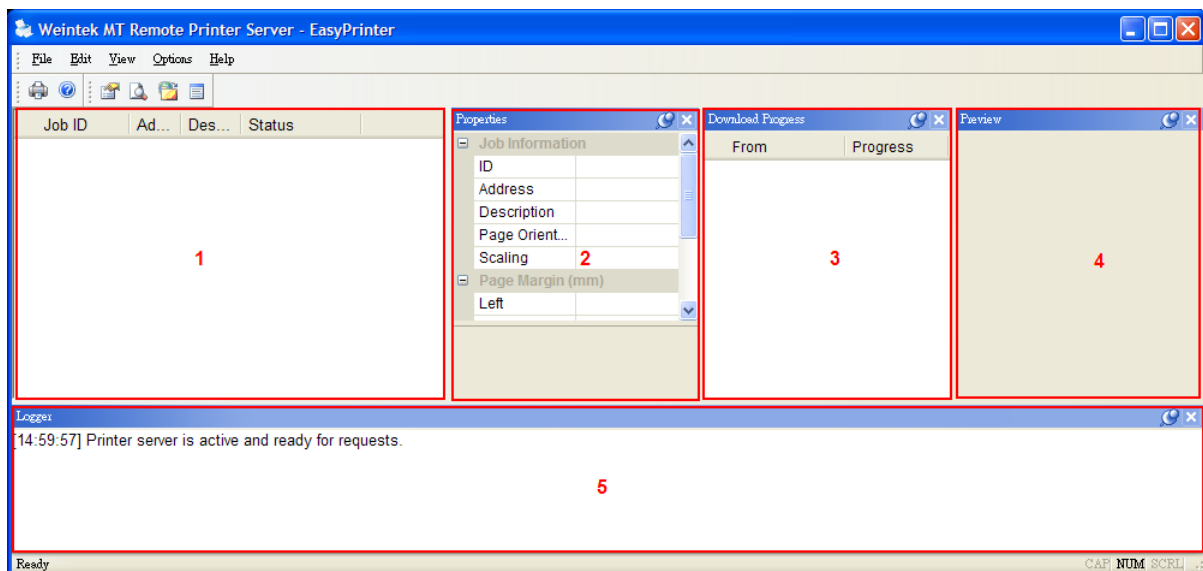
Trigger mode : OFF<->ON

Source window for print

Current base window  Window no. from register  Designate window no.

Printer : MT Remote Printer Server

Step3: Start EasyPrinter.exe on destination PC

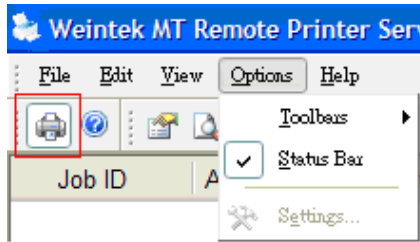


Area 1	Listing the received Print Request (Job list)
Area 2	Display the Job properties which has selected in Job list
Area 3	Display Download Progress
Area 4	Display the Job Preview which has selected in Job list
Area 5	Message Logger

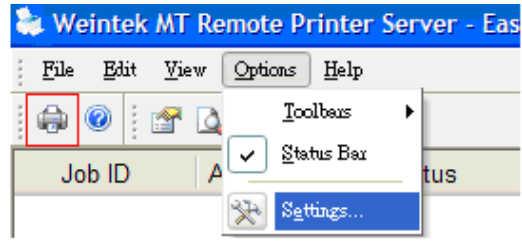
Step4: MT remote printer server settings

On Menu -> Options / Settings

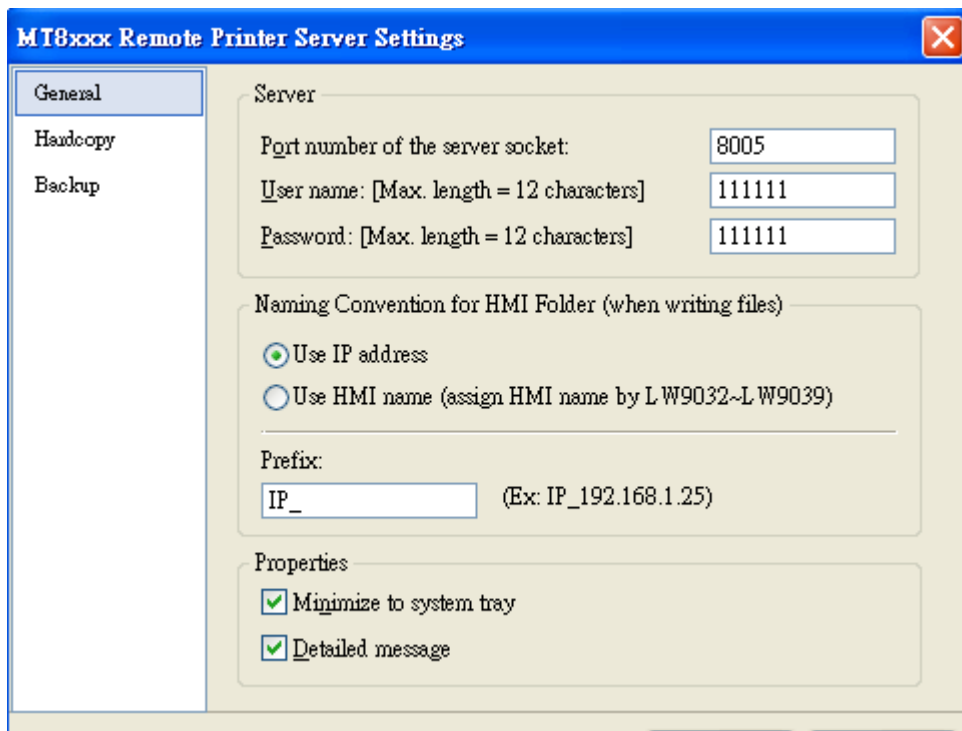
Note: MT Remote Printer Server setting is available only when stop Print Requests

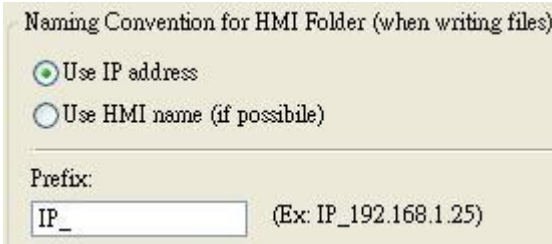


**Not available for settings**

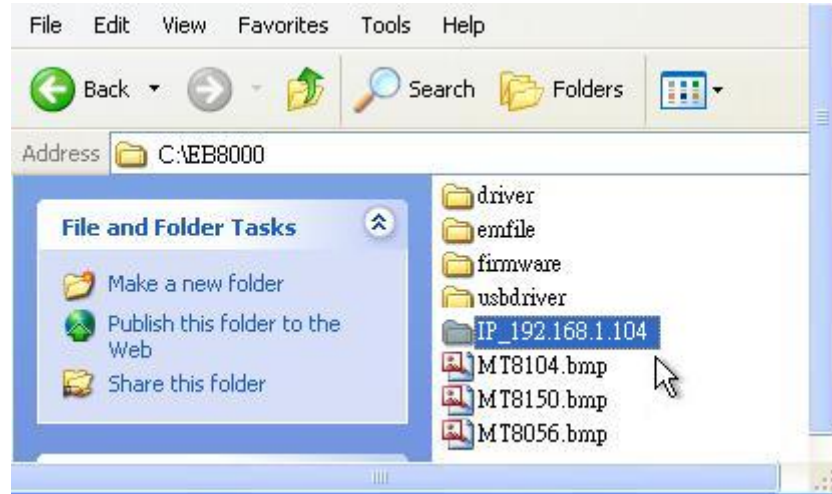


**After click printer icon to disable printing  
Available for settings**

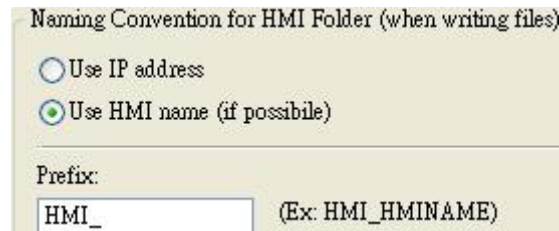


<b>Server</b>	Setting Port number / User name / Password the same as EB8000 / Printer server in system parameter.
<b>Naming Conversion for HMI folder</b>	<p>There are two ways to save the data in PC.</p> <p><b>Use IP address:</b></p>  <p>Select "Use IP address" the data will be saved in the folder named as HMI's IP address, if "Prefix" is type in name, the folder will be named as Prefix + HMI IP address.</p> <p>For example,</p>

The prefix is IP\_ and HMI IP address is 192.168.1.104, the folder in C:\EB8000 as below (IP\_192.168.1.104)



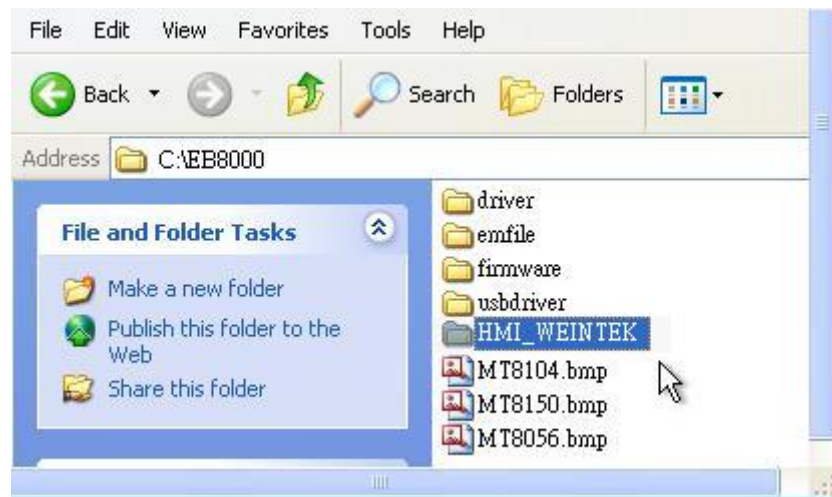
**Use HMI name:**



Select “Use HMI name” the data will be saved in the folder name as HMI name (LW9032~LW9039 total 8 word), if “Prefix” is type in name, the folder will be named as Prefix + HMI name.

For example,

The prefix is HMI\_ and HMI name in LW9032~LW9039 is WEINTEK, the folder in C:\EB8000 as below (HMI\_WEINTEK)



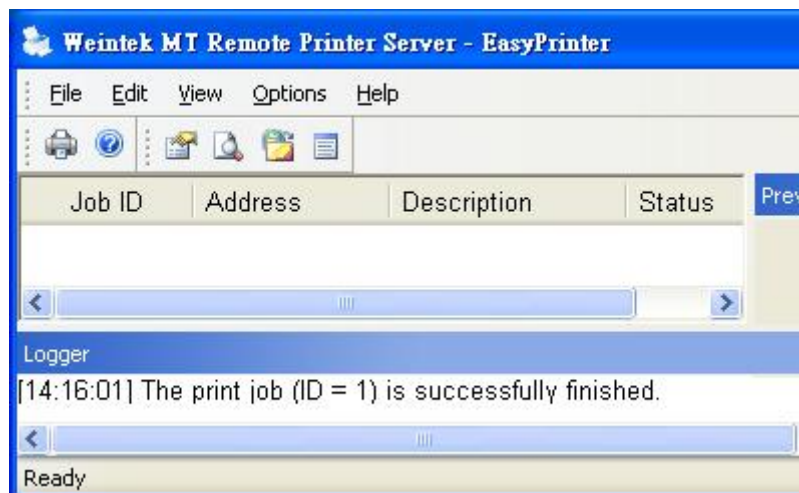
**User interface**

**Minimize to system tray:**

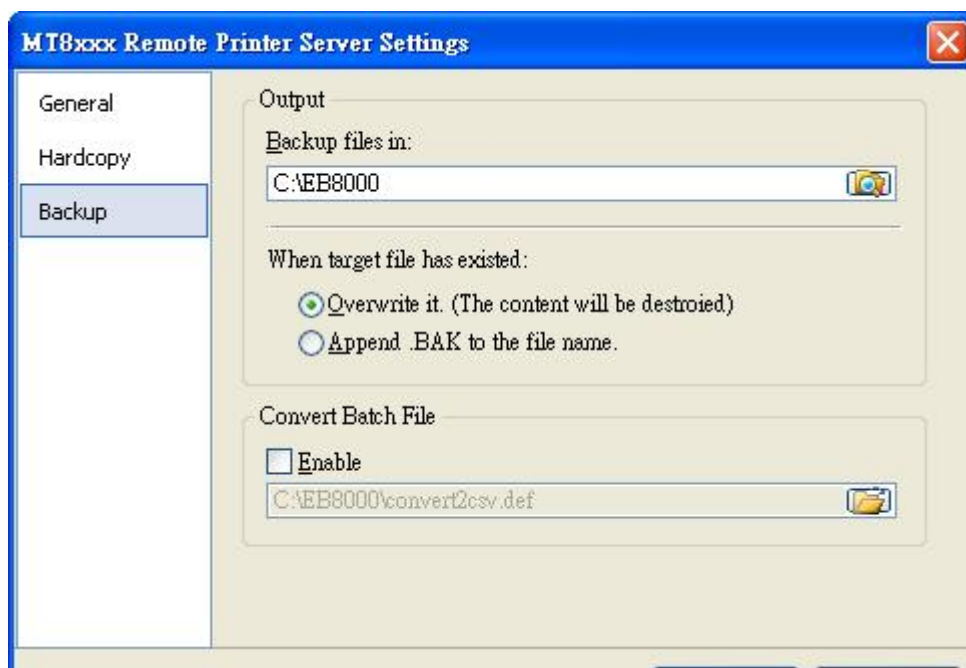
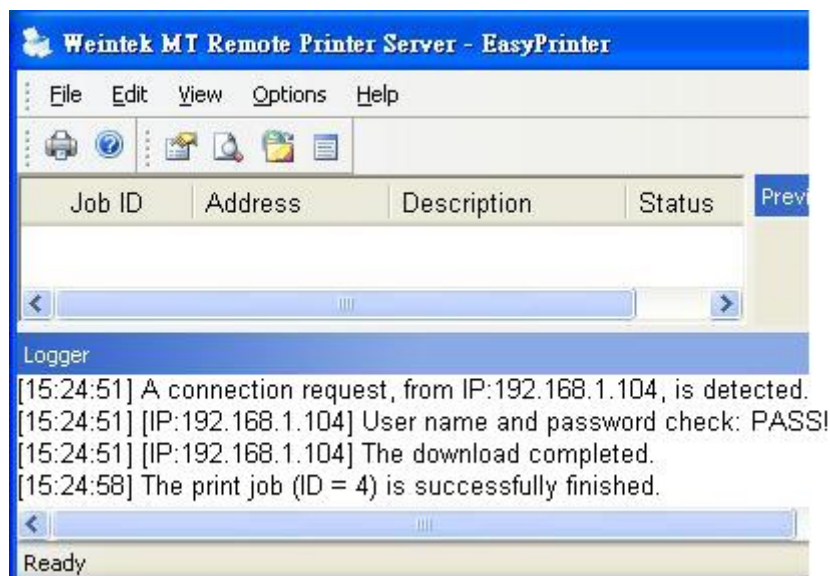
To minimize the easy printer to system tray.

**Detailed message:**

Checked detailed message, the information will appear in Logger as below



Unchecked detailed message, the information will appear in Logger as below



**Output**

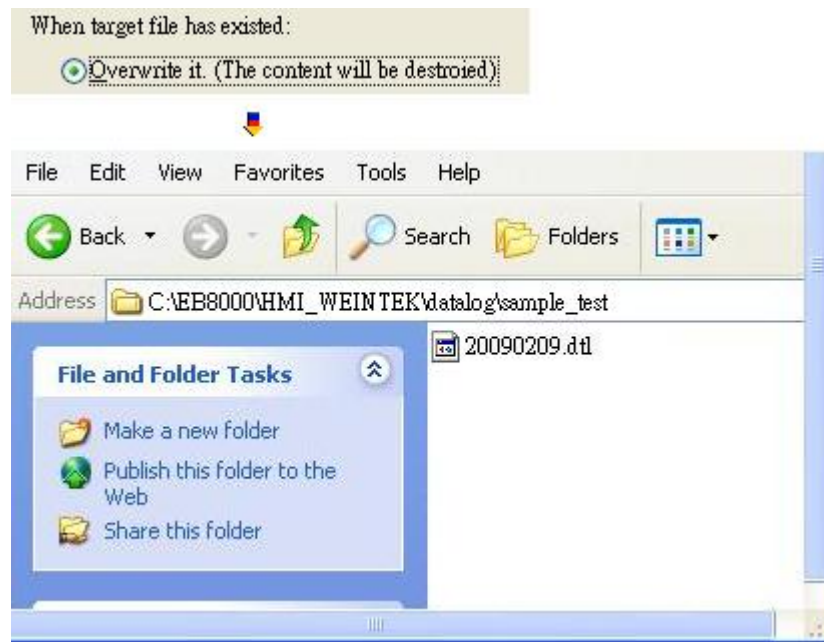
**Backup files in:**

The data will be saved in the directory which users selected.

**When target file has existed:**

**Overwrite it:**

The new data will overwrite the old data.



**When target file has existed:**

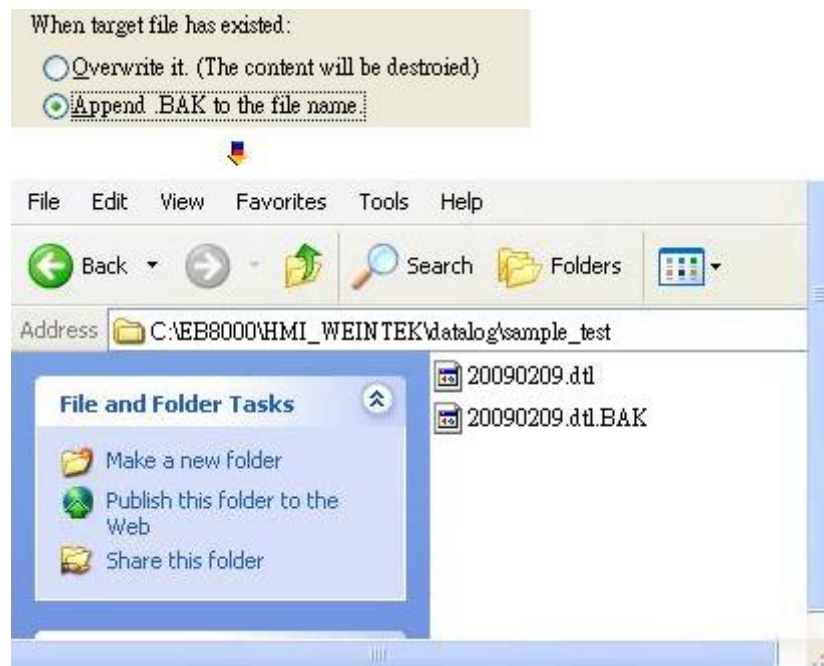
**Append .BAK to the file name:**

The new data is saved as \*\*.dtl and old data is saved as \*\*.dtl.BAK.

For example,

If there are three files, the A file will be replace to B file and B file become B.dtl.BAK, the C file become C.dtl

A file	A file	B file	A file	B file	C file
A.dtl	A.dtl.BAK	B.dtl	<del>A.dtl.BAK</del>	B.dtl.BAK	C.dtl



**Convert**

Before use this file, users have to create a \*\*.def file. This function is

**Batch file**

available for data log (\*.dtl) and event log (\*.evt) only.

**Command:****EventLog command**

"type", "command line", "IP or HMI name"

(the IP or HMI name is optional, IP is setting by

Easyprinter/Options/Settings/Naming conversion for HMI folder/Use IP

address and HMI name is setting by Easyprinter/Options/Settings/Naming

conversion for HMI folder/Use HMI name, the HMI name is from

LW9032~LW9039)

For example:

1.

"evt", "EasyConverter \$(PathName)"

(The event log file will be convert to xls file)

2.

"evt", "EasyConverter /c \$(PathName)"

(The event log file will be convert to CSV file)

**DataLog command**

"type", "command line", "IP or HMI name", "the folder name of datalog setting page"

For example:

1.

"dtl", "EasyConverter \$(PathName)"

(The data log file will be convert to xls file)

2.

"dtl", "EasyConverter /c \$(PathName)"

(The data log file will be convert to CSV file)

3.

"dtl", "EasyConverter /t3

\$(PathName)", "192.168.1.105", "DataLog\_Ethernet"

(The data log file convert from HMI IP 192.168.1.105 and data log setting page folder name is DataLog\_Ethernet)

**EasyConverter usage:** (please refer Appendix3\_EasyConverter.pdf)

\$(PathName

/c : conver to CSV file

/to ~ / t3 : format for displaying millisecond attribute

(to: 10:51:06, t1: 10:51:06.320, t2: 10:51:06.320, t3: 10:51:06(320),)

/s : setting file (scaling the file)



**NOTE**

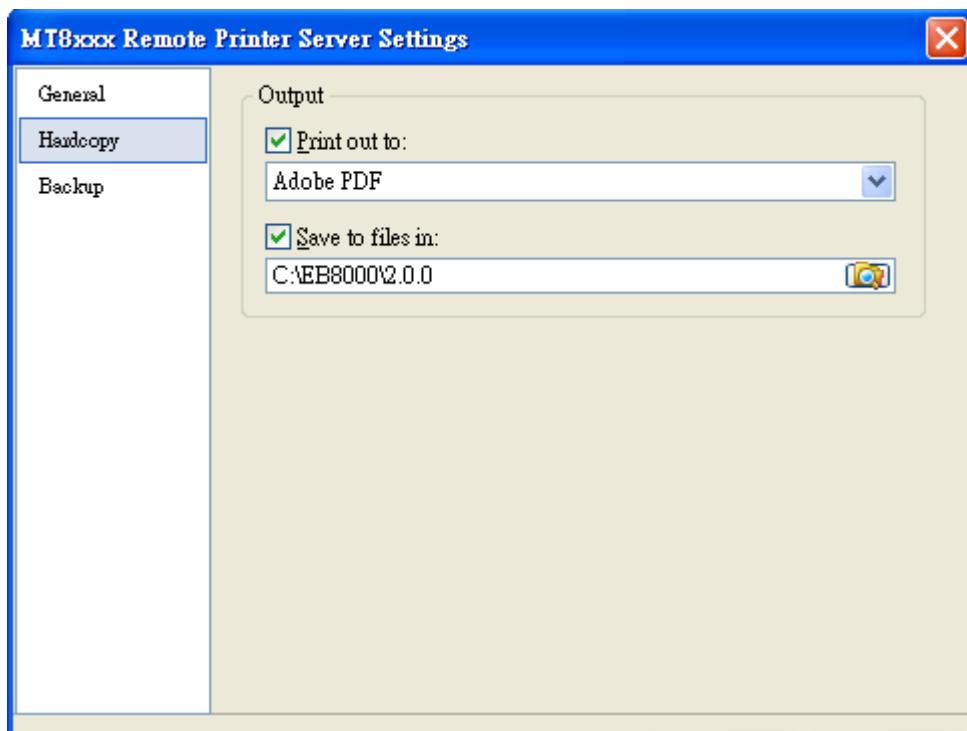
In the def file,  
Users are able to list more than one command and backup function is according to the command to execute, if the condition is not mate the command, backup function will execute next command.

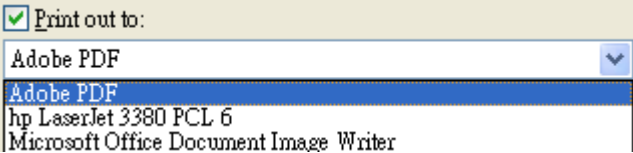
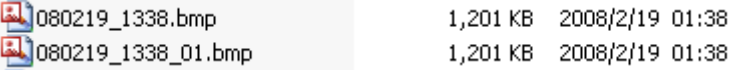
For example:

In the def file, if backup function can not find the HMI which is 192.168.1.105, the command 2 will be executed.

"dtl", "EasyConverter /t3  
\$(PathName)", "192.168.1.105", "DataLog\_Ethernet" → Command 1

"dtl", "EasyConverter \$(PathName)" → Command 2



<b>Print out to</b>	Select printer from the list for print out the data 
<b>Save to files in</b>	Indicate the file folder for saving files. When saving to files, if file name has existed, the new file name will add two digits after the file's name. [IPxxx.xxx.xxx.xxx]\[yymmdd_hhmm.bmp] 

Step5: Start outputting print requests when (printer) ready

Menu -> File / Enable Output

Step6: To trigger PLC control or Function key (screen hardcopy function) on project and then can print the screen. Be sure the EasyPrinter.exe has on running.

**Note:**

- MT Remote Printer Server does not offer printer setting (Ex: Paper size)  
User can go to Start -> Setting -> Printers and faxes -> Printing Preferences
- The maximum of Logger message is 10000 records, if over 10000 records, the data will be delete from the first record.
- The maximum of reserve Job Data is 128MB in MT Remote Printer Server, if data is over 128MB, Print Job will not receive anymore, please print out or delete Print Job for new Job reserved.